

FLOW MEASUREMENT & CONTROL

FLP/IS Switch Code 240

Conflow is renowned the world over as the leading supplier of specialist components and systems for dust suppression, fire suppression and all aspects of water control in underground coal Mining.

Today Conflow products can be found operating both on the surface and underground in all the major mining industries, from coal to gold, in more than 30 countries around the world. Furthermore, wherever minerals are moved in bulk – such as quarries, power stations and steel works - Conflow products are helping to reduce the negative impact on the local environment.

At Conflow our aim is to provide you with a comprehensive range of services to meet your individual needs.



Description

The **Conflow Code 240** - FLP/IS Flow Switch is used to make, or break an electrical circuit with the presence, or absence, of any selected value of flow within its operating range.

The unit is based on the Code 452 Flowmeter. In this case the moving magnet comes into close proximity with an electrical reed switch, which closes its contacts in the presence of a magnet.

The position of this reed switch is set to coincide with a given flow, thus closing or opening the electrical contacts at this flow level.

The unit can be used for any situation where a minimum, or maximum, flow condition needs to be satisfied.

Typical Applications

- To prevent an electric motor on a conveyor drive running if sufficient water is not circulating through the motor cooling jacket, and thus to prevent overheating
- To make a circuit on booster pumps
- To break the circuit for fire fighting on conveyors

Features

- 1/2" and 1" sizes available
- Maximum working pressure 207 bar
- Flow Switching range 9 LPM - 90 LPM
- Designed to monitor a minimum or maximum flow condition
- FLP/IS versions available

FLOW MEASUREMENT & CONTROL

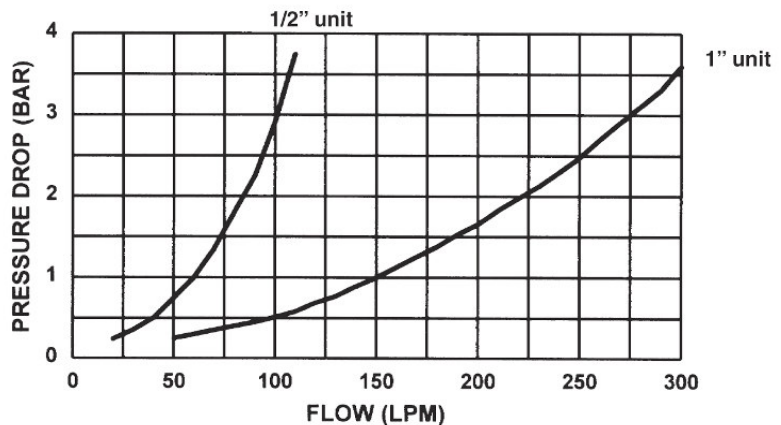
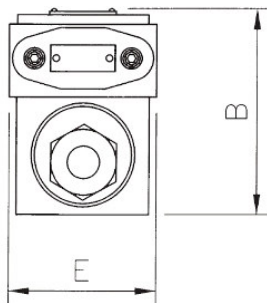
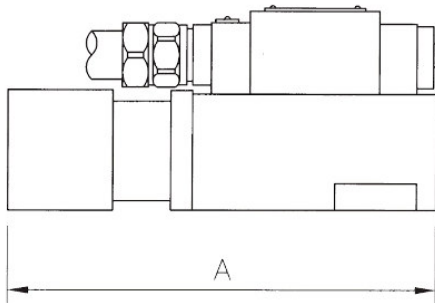
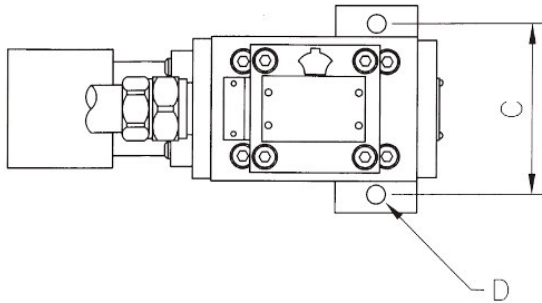
FLP/IS Switch Code 240

Specifications

Unit Size	DIMENSIONS (mm)	
	1/2"	1"
A	250	250
B	124	124
C	95	95
D	11	11
E	90	90
WEIGHT	11.5 Kg	11.5 Kg

REED SWITCH DETAILS

TYPE DRA 283 70-80 ATS PULL IN RANGE
 ACTUATING TIME (N.O) – 0.2 MILLISECONDS
 CONTACT RATING – 250VA (AC OR DC MAX)
 SWITCHING CURRENT – 2.0A (MAX)
 CAPACITANCE – 0.6Pf
 SWITCHING VOLTAGE – 250AC (RMS) MAX
 BREAKDOWN VOLTAGE 575DC MAX



The information on this data sheet is accurate to the best of Conflow's knowledge, however we reserve the right to alter the product specification at any time. For any specific updated detail, please contact us.