

PRESSURE MEASUREMENT & CONTROL

Ratio Reducing Valves Code 61

Conflow is renowned the world over as the leading supplier of specialist components and systems for dust suppression, fire suppression and all aspects of water control in underground coal Mining.

Today Conflow products can be found operating both on the surface and underground in all the major mining industries, from coal to gold, in more than 30 countries around the world. Furthermore, wherever minerals are moved in bulk – such as quarries, power stations and steel works - Conflow products are helping to reduce the negative impact on the local environment.

At Conflow our aim is to provide you with a comprehensive range of services to meet your individual needs.



High pressure



Standard

Description

The **Conflow Code 61** -Ratio Reducing Valve is used to provide a reduced downstream fluid pressure.

The valve is made to a fixed ratio, to reduce the upstream pressure by a set proportion, making no allowance for inlet pressure variations.

This valve is used where the inlet pressure is basically constant or where pressure reduction is required but does not need to be closely maintained.

Typical Applications

- To reduce the water mains pressure in underground mines at the shaft bottom before distribution throughout the mine. This is particularly useful in deep mines where the pressure head is high or where the pipe systems are not suitable for high pressures
- To control pressure in fire fighting systems

PRESSURE MEASUREMENT & CONTROL

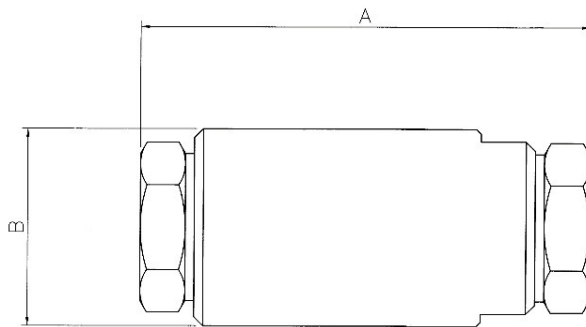
Ratio Reducing Valves Code 61

Features

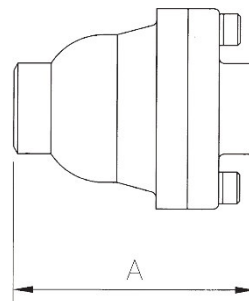
- 1/2", 1", 1 1/2", 2", 3" and 4" sizes available
- Maximum working pressure 105 bar
- High Pressure Units up to 350 bar (1/2") and 206 bar (1")
- Ratio reduction from 1.1:1 to 20:1 of inlet pressure
- Suitable for use with water and oil
- Compact in-line fitting

Specifications

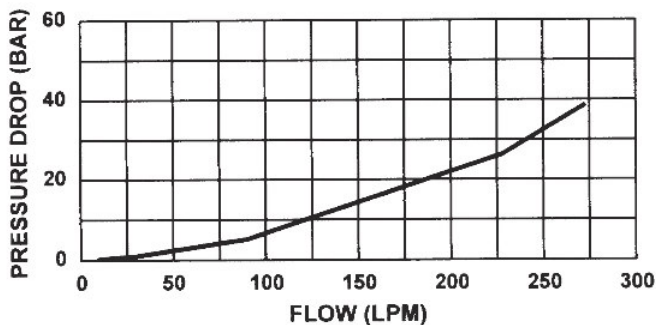
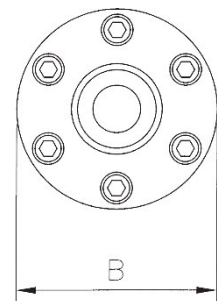
Unit Size	1/2"	1"	1 1/2"	2	3	4
A	101	146	184	172	172	267
B	76	121	165	165	184	247
Weight	1.81 Kg	4.76 Kg	8.61 Kg	20.41 Kg	24.95 Kg	34.02 Kg



High pressure unit



Standard unit



■ 1/2" Unit (10:1 Ratio) Ratio Reducing Valves (code 61)

The information on this data sheet is accurate to the best of Conflow's knowledge, however we reserve the right to alter the product specification at any time. For any specific updated detail, please contact us.