

DUST SUPPRESSION

Spray Control Valves Code 100

Conflow is renowned the world over as the leading supplier of specialist components and systems for dust suppression, fire suppression and all aspects of water control in underground coal Mining.

Today Conflow products can be found operating both on the surface and underground in all the major mining industries, from coal to gold, in more than 30 countries around the world. Furthermore, wherever minerals are moved in bulk – such as quarries, power stations and steel works - Conflow products are helping to reduce the negative impact on the local environment.

At Conflow our aim is to provide you with a comprehensive range of services to meet your individual needs.



Description

The **Conflow Code 100** - Spray Control Valve is capable of controlling the flow of any fluid by mechanically sensing belt movement, without the need for an independent power supply. This is achieved by a drive wheel in frictional contact with the moving conveyor belt. The rotating wheel generates hydraulic pressure to open an ON/OFF valve built into the unit.

The valve can be positioned so that the wheel only contacts the belt when loaded, ensuring the valve is only open when necessary, avoiding overwetting, belt slip and soft ground.

Typical Applications

- Supplying dust suppression water onto conveyer belts transporting mineral, particularly at a transfer point, where one conveyer discharges its contents onto a second belt, and dust is often created.
- Ideal in applications where there is no electrical or other source of power.
- Perfect for supplying water sprays on bottom belts where fine dust has accumulated.
- 1" Unit available for washing purposes.

Best used in conjunction with Conflow Code 1188 Swivel Sprays, or Conflow Code 96 Multidisc Cluster

DUST SUPPRESSION

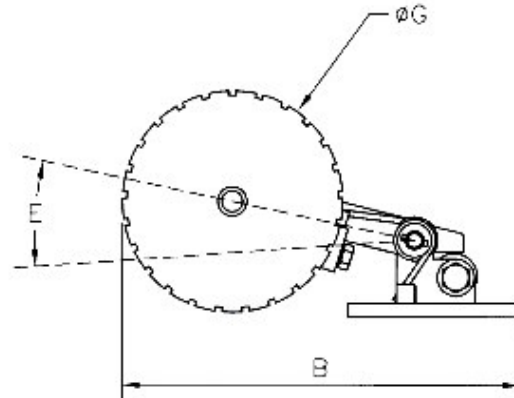
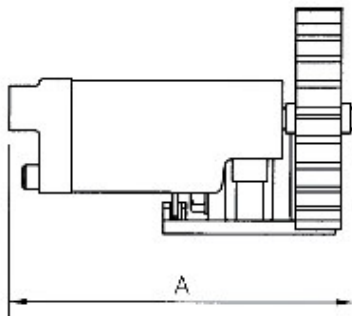
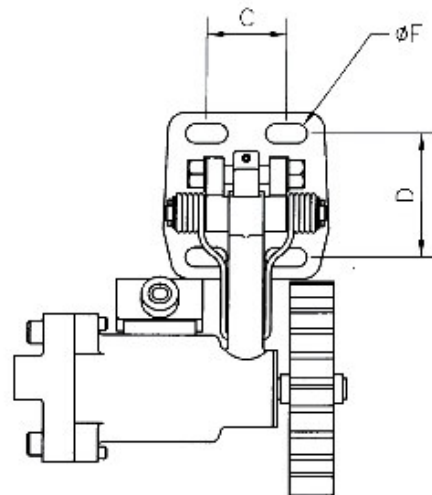
Spray Control Valves Code 100

Features

- 1/2" Standard and large volume units.
- 1" Unit available on special request.
- Maximum working pressure 105 bar.
- 4" or 6" driving wheels.
- No additional power supply is needed.
- Operates at belt speeds from 0.5 M/sec (100 ft/min) to 3.75 M/sec (750 ft/min)

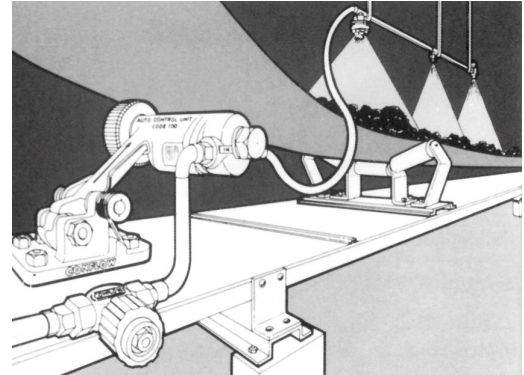
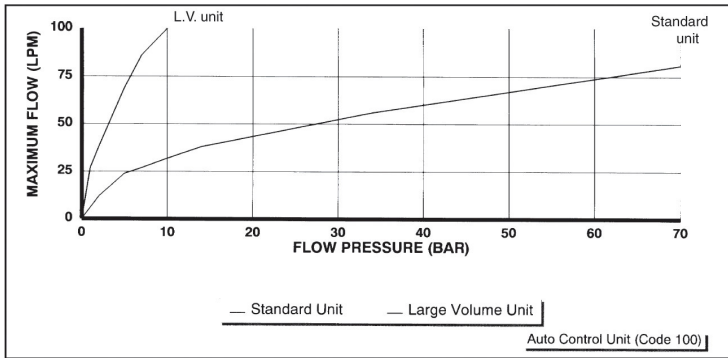
Specifications

DIMENSION	UNIT	
A	mm	280
B	mm	270
C	mm	60
D	mm	90
E	mm	15°
ØF	mm	14
ØG	mm	100 OR 150
Weight	Kg	9 Kg



DUST SUPPRESSION

Spray Control Valves Code 100



	100mm dia.wheel	150mm dia.wheel
Minimum speed to operate	110 ft/min	150 ft/min
Maximum speed	500 ft/min	750 ft/min
Maximum high adjustable position - Baseplate to wheel top	150mm	175mm
Recommended installation position - Base plate to wheel top	147mm	172mm
Minimum low adjustable position - Baseplate to wheel top	110mm	135mm
Further depressable movement - Baseplate to wheel top	10mm	10mm
Total movement from maximum to minimum height	50mm	50mm

The information on this data sheet is accurate to the best of Conflow's knowledge, however we reserve the right to alter the product specification at any time. For any specific updated detail, please contact us.